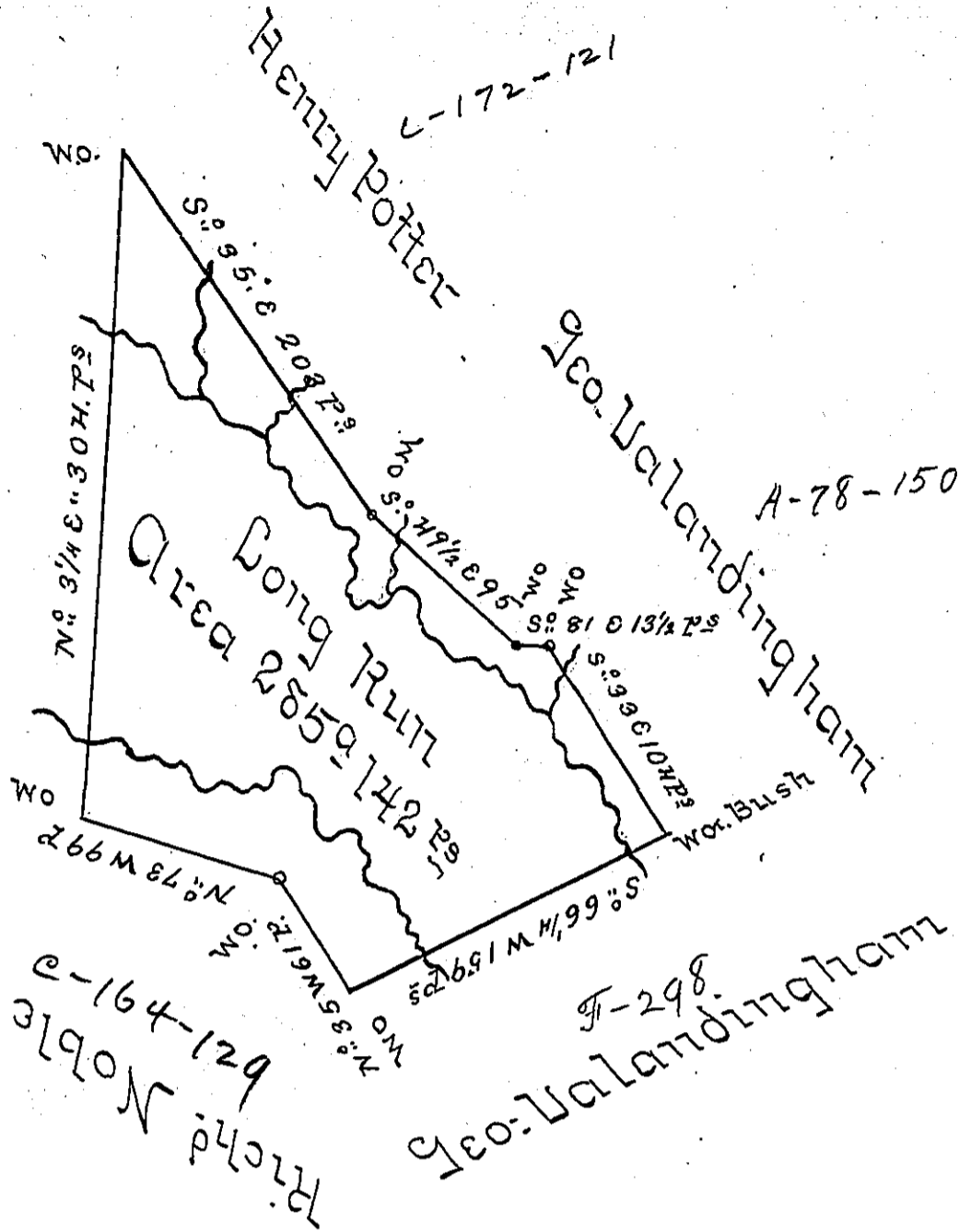


A-82-160

6-10-113

Jos. Beelor. Saml Rawlston



A Draught of a Survey call'd "Long Run" lying on  
 Robinsons Run in Washington County contg.  
 285 Ac<sup>s</sup> 142 P<sup>s</sup> ~~Survey Measure~~ With the usual  
 Allow<sup>ce</sup> executed Oct<sup>r</sup> 1<sup>st</sup> 22<sup>d</sup> 1785 in Pursuance  
 of a Warrant in the Name of Henry Noble for  
 500 Ac<sup>s</sup> dated Sept<sup>r</sup> 2<sup>d</sup> 1785 -

Presley Nevill } D.S.  
 Matt<sup>r</sup> Ritchie }

Jno. Lukens Esq<sup>r</sup> Sec<sup>y</sup>

IN TESTIMONY that the above is a copy of the original remaining on file in  
 the Department of Internal Affairs of Pennsylvania, made  
 conformably to an Act of Assembly approved the 16th day of  
 February, 1833, I have hereunto set my Hand and caused  
 the Seal of said Department to be affixed at Harrisburg,  
 this Twenty second day of March 1906.

*James S. Mason*  
 Secretary of Internal Affairs.